

**IMPACT DEFINITIONS**

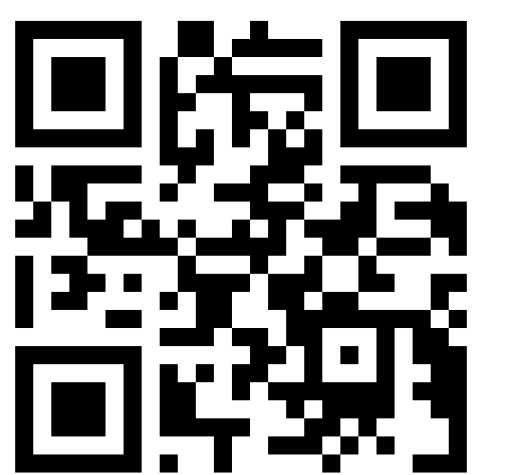
**Primary Impacts:** Full property take/acquisition, partial property take/acquisition, compromising development or redevelopment potential, loss of primary direct access, loss of tree canopy/existing character, separation of neighborhoods

**Secondary Impacts:** Loss/degradation of access due to medians or proximity to ramps, eventual change/increase in land use intensity or use, direct increase in traffic, direct increase in noise

**Tertiary Impacts:** Visual impacts from structures, loss of habitat or wildlife corridors, character change in area, indirect increase in noise, increase in commercial traffic intrusion

**LEGEND**

- PROJECT FULL TAKINGS
- PRIMARY IMPACTS
- SECONDARY IMPACTS
- TERTIARY IMPACTS
- EXISTING PARCELS
- PROJECT BOUNDARY



LEARN MORE AT  
[SAVEOURSEASLANDS.COM](http://SAVEOURSEASLANDS.COM)

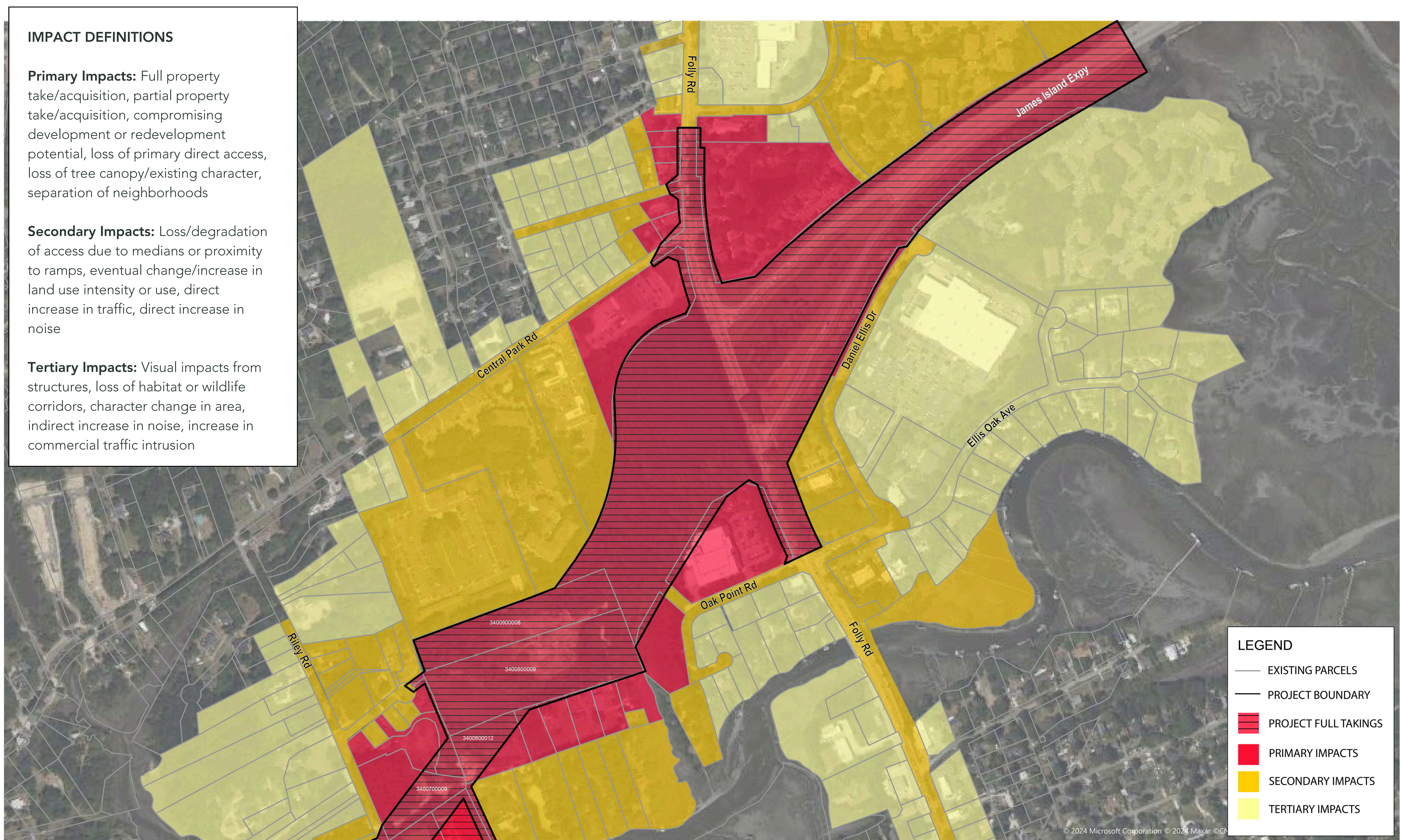


## IMPACT DEFINITIONS

**Primary Impacts:** Full property take/acquisition, partial property take/acquisition, compromising development or redevelopment potential, loss of primary direct access, loss of tree canopy/existing character, separation of neighborhoods

**Secondary Impacts:** Loss/degradation of access due to medians or proximity to ramps, eventual change/increase in land use intensity or use, direct increase in traffic, direct increase in noise

**Tertiary Impacts:** Visual impacts from structures, loss of habitat or wildlife corridors, character change in area, indirect increase in noise, increase in commercial traffic intrusion



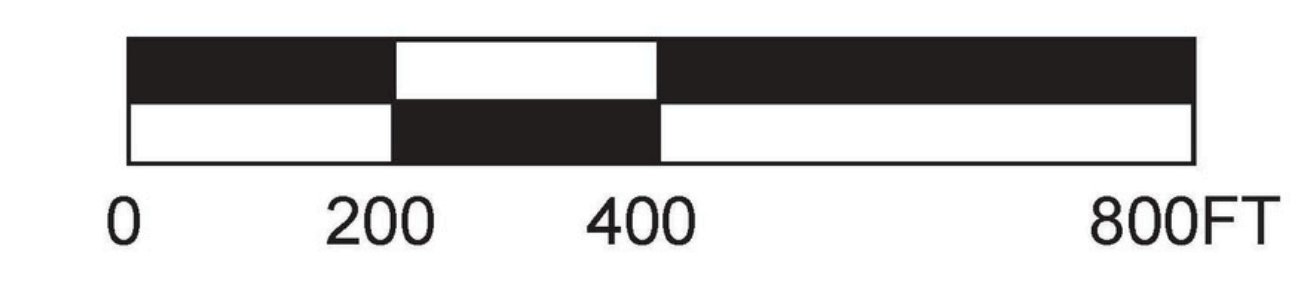
## LEGEND

- EXISTING PARCELS
- PROJECT BOUNDARY
- PROJECT FULL TAKINGS
- PRIMARY IMPACTS
- SECONDARY IMPACTS
- TERTIARY IMPACTS

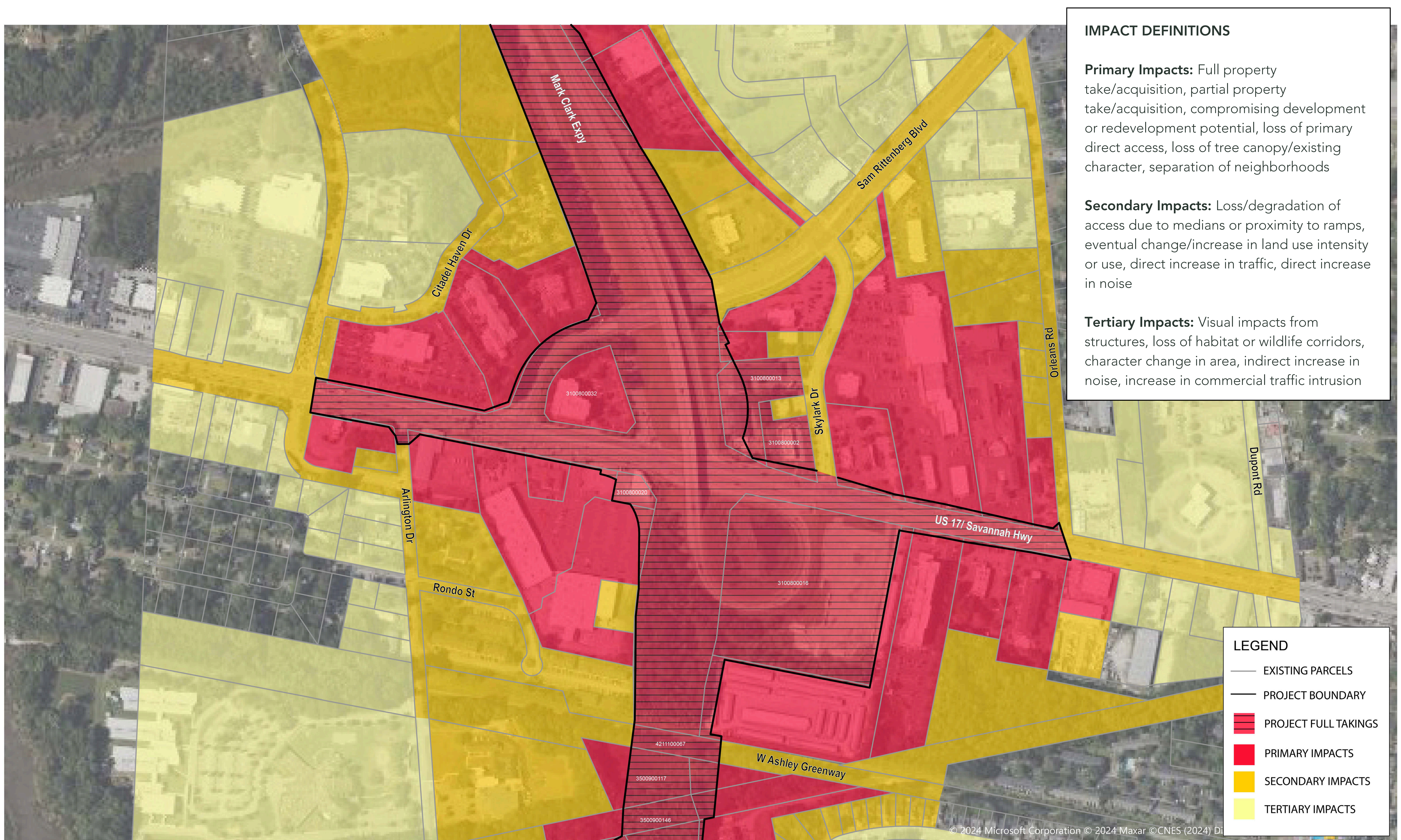
© 2024 Microsoft Corporation © 2024 Maxar © CN

Map courtesy of Coastal Conservation League

# AT RISK MAP: JAMES ISLAND CONNECTOR







**IMPACT DEFINITIONS**

**Primary Impacts:** Full property take/acquisition, partial property take/acquisition, compromising development or redevelopment potential, loss of primary direct access, loss of tree canopy/existing character, separation of neighborhoods

**Secondary Impacts:** Loss/degradation of access due to medians or proximity to ramps, eventual change/increase in land use intensity or use, direct increase in traffic, direct increase in noise

**Tertiary Impacts:** Visual impacts from structures, loss of habitat or wildlife corridors, character change in area, indirect increase in noise, increase in commercial traffic intrusion

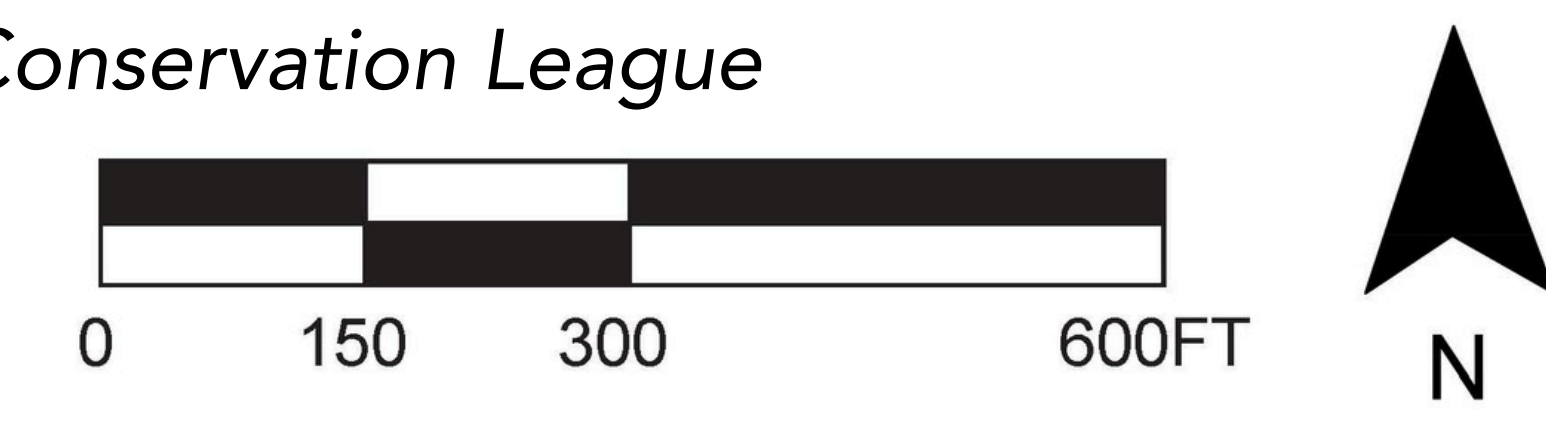
**LEGEND**

- EXISTING PARCELS
- PROJECT BOUNDARY
- █ PROJECT FULL TAKINGS
- █ PRIMARY IMPACTS
- █ SECONDARY IMPACTS
- █ TERTIARY IMPACTS

© 2024 Microsoft Corporation © 2024 Maxar ©CNES (2024) Di

Map courtesy of Coastal Conservation League

**AT RISK MAP: US 17/SAVANNAH HIGHWAY**



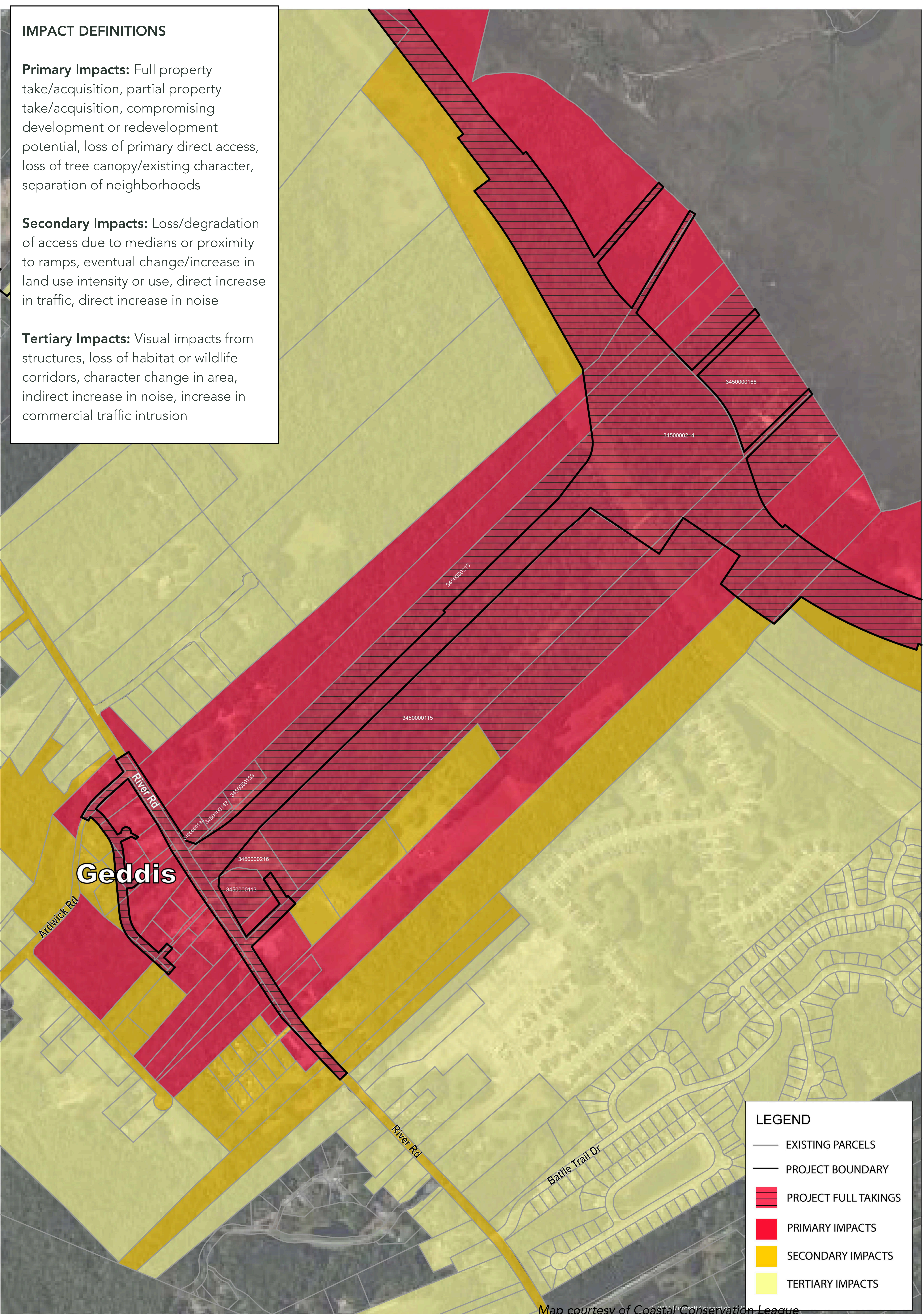


## IMPACT DEFINITIONS

**Primary Impacts:** Full property take/acquisition, partial property take/acquisition, compromising development or redevelopment potential, loss of primary direct access, loss of tree canopy/existing character, separation of neighborhoods

**Secondary Impacts:** Loss/degradation of access due to medians or proximity to ramps, eventual change/increase in land use intensity or use, direct increase in traffic, direct increase in noise

**Tertiary Impacts:** Visual impacts from structures, loss of habitat or wildlife corridors, character change in area, indirect increase in noise, increase in commercial traffic intrusion



## LEGEND

- EXISTING PARCELS
- PROJECT BOUNDARY
- PROJECT FULL TAKINGS
- PRIMARY IMPACTS
- SECONDARY IMPACTS
- TERTIARY IMPACTS

Map courtesy of Coastal Conservation League

## AT RISK MAP: RIVER ROAD

